

わが家の防災メモ

自分の地区のマップを確認して、わが家の防災メモに記入！

1. 避難先を探して、記入しましょう。



浸水のおそれが少ない町外の親戚・知人宅

境・長田・猿島・森戸・静

地区

あなたや家族の名前を記入

広域避難所

どちらかにチェック

- ☒ 茨城県立坂東総合高等学校
- ☒ 茨城県立総和工業高等学校

小学校(広域避難集合場所)

※交通手段がなく、広域避難所に移動できない方

広域避難所に移動できない方は、お住まいの地区の小学校を記入

近くの避難施設や2階にとどまることが可能な区域の高い建物



高い建物へ
(垂直避難)

近くの避難施設や、逃げどきマップで 0.5m未満 か 0.5~3m未満 の場所にある2階以上の建物を記入

2. 自宅はどちらの地域か確認しましょう。

どちらかにチェック

- ☒ 関東・東北豪雨で浸水した地域
- ☒ 関東・東北豪雨で浸水した地域以外の 境町全域

早めに
情報が
出ます

13 ページで 避難情報発令のタイミング を確認

3. いつ避難を開始するか、また、安全に避難するために、いつ、何をするかを記入しましょう。

13 ページで 避難情報発令の目安とタイミング を確認

わが家の広域避難タイムライン 【マイ・タイムライン】

台風の接近など、大雨が予測される タイミングで

例) 非常持ち出し袋を再確認しておく (お母さん)

車で自主避難 発令のタイミングで

広域
避難

- ☐ 高い場所にある親戚・知人宅へ
車で自主避難を開始

例) 古河市のおばあちゃんの家に車で避難する (お父さん以外)

避難準備・高齢者等避難開始 発令のタイミングで

広域
避難

- ☐ 車で広域避難所へ
- ☐ 徒歩で各地区の小学校へ
※交通手段がなく、広域避難所に移動できない方

例) となりのおじいさんと車で総和工業高校へ避難する (お父さん)

避難勧告 発令のタイミングで

広域
避難

- ☐ 各地区の小学校から広域避難所への
バスが出発
※ 避難勧告発令後は車の利用は不可

避難指示(緊急) 発令のタイミングで 避難が終了していない方は

垂直
避難

- ☐ 広域避難はできません
- ☐ 近くの避難施設や、2階にとどまることが可能な区域の高い建物へ

2階にとどまることが可能な区域の高い建物とは・・・
逃げどきマップで 0.5m未満 か 0.5~3m未満 の場所にある2階以上の建物

発行 境町
企画・編集 境町総務部防災安全課 / (株) アイ・ディー・エー 社会技術研究所
監修 片田敏孝 (東京大学大学院情報学環特任教授)

お問い合わせ 境町総務部防災安全課
TEL. 0280-81-1308
FAX. 0280-87-5872

本書に掲載した地図の一部は、国土地理院長の承認を得て、同院発行の数値地図(国土基本情報 20 万)及び基礎地図情報を使用した。(承認番号 30 440 第 780 号)

* The Japanese word “nigedoki” can literally be translated to “time to escape.” A *nigedoki* map is designed for the user to find out what action they should take in case of a flood.



Think about evacuation using a “nigedoki map*”.

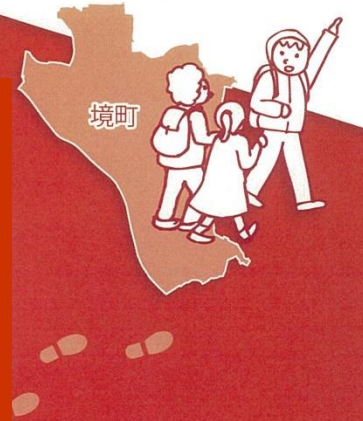
To live safely in Sakai Town, you need to know about...

“Long-Range Evacuation”

境町水害ハザードマップ

保存版

平成 31 年 4 月発行



Q1 What flood is the one that we have to care most about to protect our lives?

If heavy rain continues in the upper reaches of Tonegawa and Watarasegawa in Gunma and Tochigi prefectures, the risk of flooding of those rivers will rise. Once they flood, a severe flood disaster will result, affecting their whole basins.

To protect your life, you need long-range evacuation outside the town.
(See pages 6-7 "To save lives from a flood".)

If Tonegawa or Watarasegawa flood...

Disaster
affecting
entire basins
of Tonegawa and
Watarasegawa

Greater
Damage

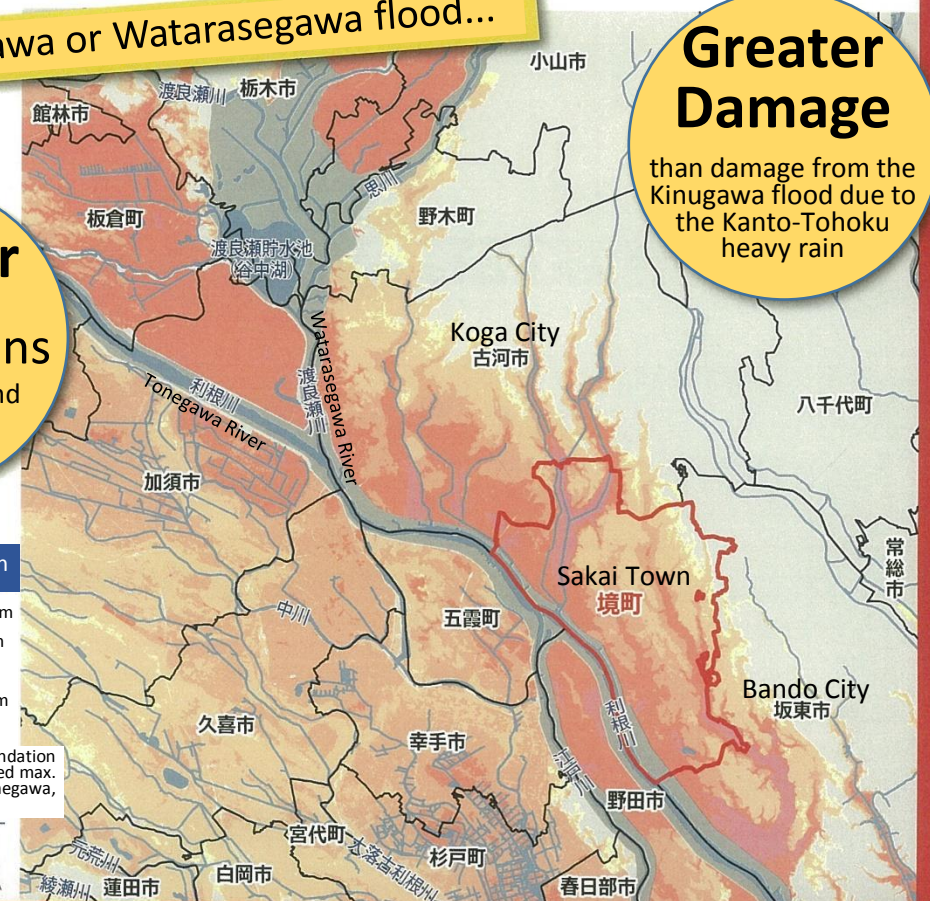
than damage from the
Kinugawa flood due to
the Kanto-Tohoku
heavy rain

Max. inundation depth

- 10m – less than 20m
- 5m – less than 10m
- 3m – less than 5m
- 0.5m – less than 3m
- Less than 0.5m

This map is based on the inundation risk area maps (showing predicted max. inundation risk area) for Tonegawa, Watarasegawa, and Omoigawa.

0 2.5 5 km
1/170,000



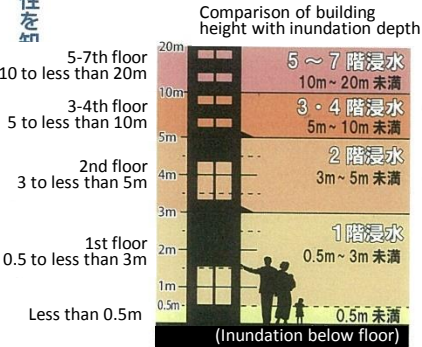
Learn about floods

If Tonegawa or Watarasegawa flood...

各河川の浸水想定区域図は 26 ページ

水害特性を知る

Max. inundation depth



Areas where the flow velocity is high and wooden houses are likely to collapse

Inundation risk areas with house collapse risk (flood flow)

Water Collects in the town's densely-populated, low-lying area.

人口集中地区 (平成 27 年総務省統計局)
Densely populated area

About 90% of the town will be flooded.

About 95% of the population will be affected by flooding.

Violent streams may destroy houses.

Floodwaters may not recede for about 2 weeks.

Inundation in areas along Tonegawa and small rivers may last for about 2 weeks.

Inundation duration

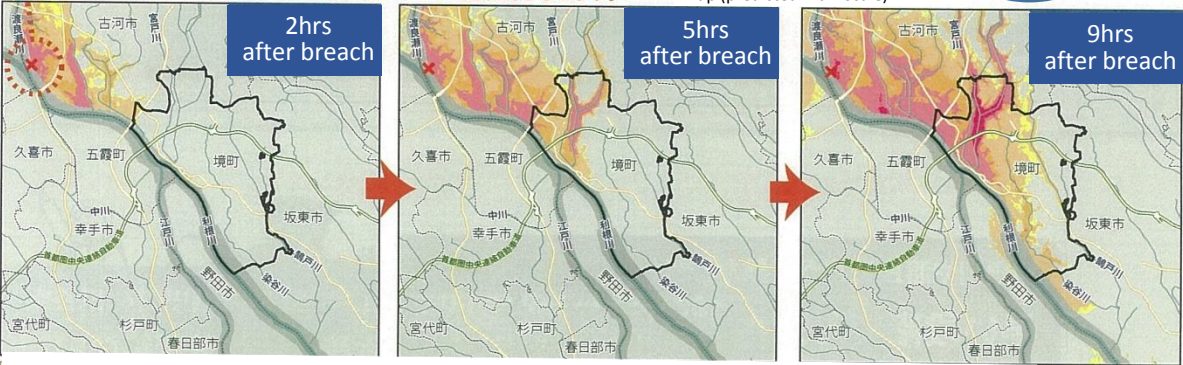


マップで示す浸水の深さ、浸水継続時間などは、利根川、渡良瀬川、思川浸水想定区域図（想定最大規模）に基づき作成しています。

Flood-flow arrival time

Rough estimates from two locations; a levee breach at either location may be extremely devastating to Sakai Town.

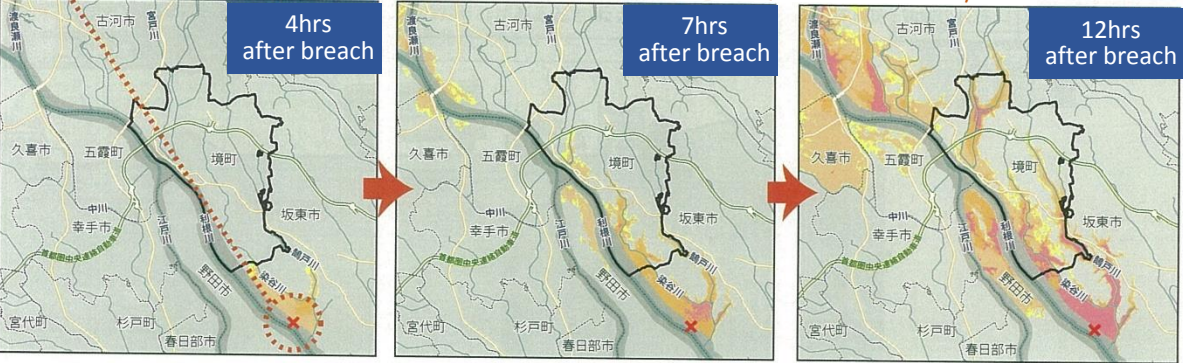
If a levee breach occurs around where Tonegawa meets Watarasegawa (see the "x" mark)...



Inundation may result, whether flooding starts upstream or downstream of the town.

水害特性を知る

If a levee breach occurs around where Tonegawa meets Kugedogawa (see the "x" mark)...



Records of the Kanto and Tohoku heavy rain

In September 2015, the Miyadogawa River breached the levee in Koga City during the heavy rain over the Kanto and Tohoku regions. In Sakai Town, the Someyagawa River overflowed, which caused serious damage to many households, including 246 houses flooded above the floor level and 247 below the floor level.



Photo: Inundation in Sakai Town in September 2015

About 10% of the town was flooded.

About 60% of the housing damage occurred in the town's central area. (densely populated district)



In Sakai Town, unfortunately, one person died, and agricultural and livestock products were damaged significantly.

Main damage records

Dead: 1
Injured: 3
Evacuation advisory issued to: 1,600 residents of 637 households
Evacuation preparation information issued to: 4,949 residents of 1,697 households
Evacuees: 71 (evacuation centers in operation for 23 days)
Total damage cost (including damage to buildings): about ¥2 billion (\$18.5 million)

To protect lives from floods



Evacuate before rivers flood to a place that will not be flooded.

The town will be proactively providing evacuation-related information. However, it is you who make a decision about evacuation and act on it.

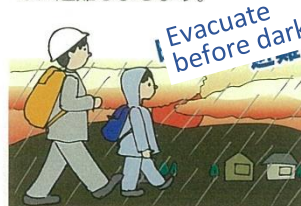
When Tonegawa or Watarasegawa is very likely to flood, Start early evacuation outside the town by car.

If heavy rain is expected, for example, due to a nearing typhoon, start early evacuation to the houses of relatives or friends outside the town, where there is little risk of flooding.



余裕を持って
Evacuate early

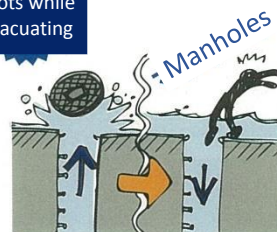
台風の接近など、大雨が予測される場合には、暗くなる前に早めに避難しましょう。



After hearing an evacuation advisory, evacuate on foot.

混雑による渋滞の発生が考えられます。車での避難を考えている方は、遅くとも「避難準備・高齢者等避難開始」で避難を開始しましょう。

Dangerous spots while evacuating



水が濁って足元が見えにくくなります。もしフタが外れていると、マンホールや排水溝などに転落して危険です。

What is the difference between when Tonegawa and Watarasegawa are likely to flood and when small and medium rivers are likely to flood?

The difference is the amount and range of rainfall.

In the case of Tonegawa and Watarasegawa

The rivers may near flooding, if heavy rain continues over a wide area along Tonegawa in Gunma and Tochigi prefectures (e.g., Typhoon Kathleen).

River flood

River floods rarely occur, but when they do, they cause severe damage.



In the case of small and medium rivers

The rivers may near flooding when localized heavy rainfall occurs in or around the town (e.g., the flood in Sakai Town due to the Kanto-Tohoku heavy rain)

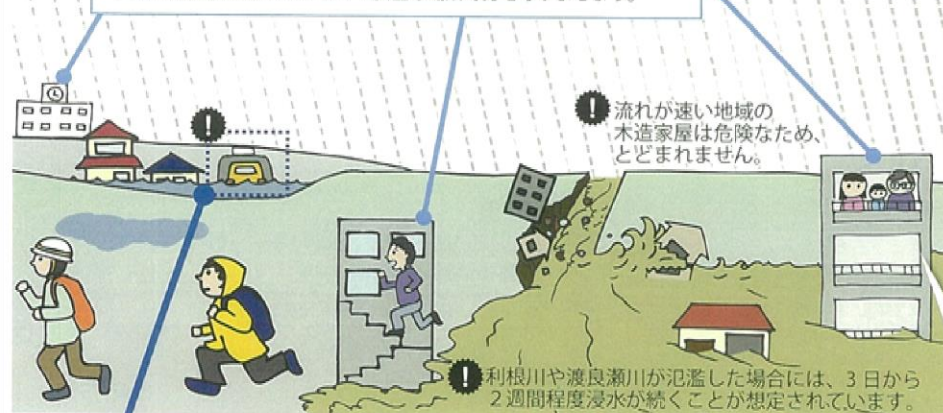
Inland flood



Inland floods are more likely to occur but less likely to be fatal.

When small or medium rivers, such as Someyagawa, the Central Drainage Channel, Miyadogawa, and Kugedogawa, are increasingly near flooding, you should move to evacuation centers in the town or to tall, strong buildings where they can stay safe even after the area is flooded.

染谷川などの中小河川の氾濫や、内水氾濫のおそれがあるときは、無理に広域避難せずに少しでも安全な場所で身を守りましょう。



To tall buildings (vertical evacuation)

Dangerous spots while evacuating

Underpass



高架下のアンダーパスなど、周囲より低く冠水しやすい道路の通行は避けましょう。

If you stay home...

高い建物でも、浸水が及ぶ高さにとどまっていますは危険です。建物の上層階など、浸水から安全な場所へ避難しましょう。

Try to stay higher than floodwaters



3- to 7-day supplies

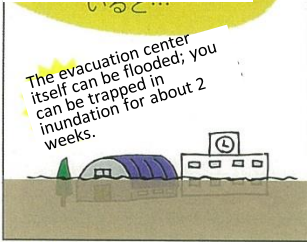
水道や電気・ガス・トイレなどが長期間使えなくなることもあります。十分な準備と長期間孤立してしまうことへの覚悟が必要です。

備蓄品リストは27ページに掲載

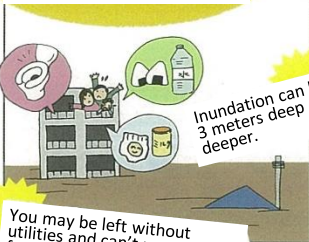
Long-range evacuation

If Tonegawa or Watarasegawa flood...

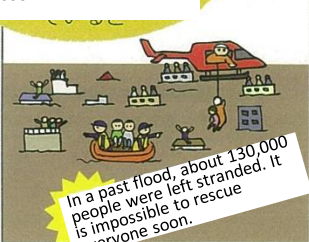
You may think you'll be safe at the nearest evacuation center...



You may think you'll be safe staying on the 3rd floor or up...



You may think someone come to rescue you soon...

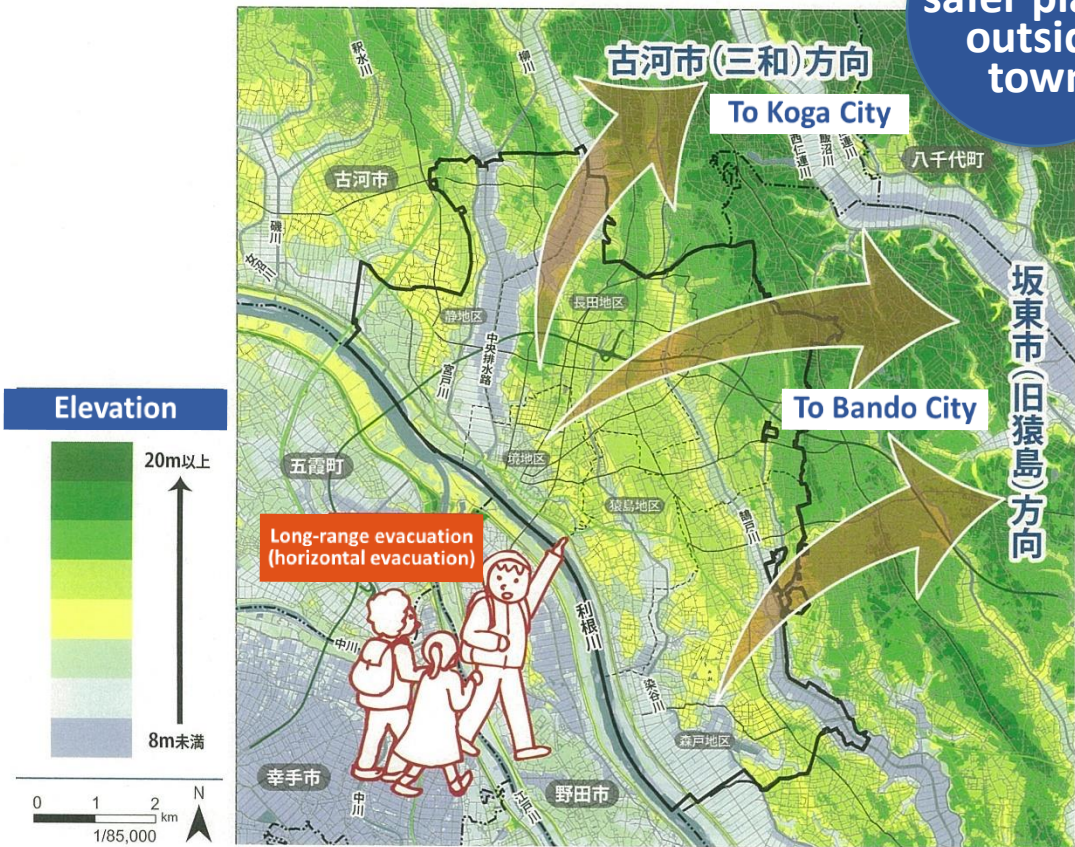


※ 境町、古河市、坂東市、加須市北川辺、板倉町の浸水人口の合計（計画規模の場合）
なお、想定最大規模では約 16 万人

It is dangerous to stay in the town.

Evacuate to higher ground or places outside the town where there is little risk of flooding.

To safer places outside town



Find a place for evacuation by yourself, such as houses of relatives and friends, hotels and inns, and offices you are working at, which are outside the town and in areas where there is little risk of being flooded.



If you can't find a safe place for evacuation...

Evacuate by car to a long-range evacuation center in Koga or Bando cities.

Long-range evacuation by car	
Long-range evacuation centers: Evacuation centers outside the town where evacuees can stay until there is no disaster risk.	
Centers	Ibaraki Prefectural Bando High School Ibaraki Prefecture Sowa Kyogyo High School
Address	2833 -115 Sakasai, Bando 1004 -1 Kuzuo, Koga
Stories	3 stories 4 stories
Safe floors	All floors 2 or higher
*Safe floors are determined based on the flood simulations of Tonegawa and Watarasegawa.	

If long-range evacuation is not an option because you don't have any transportation...

Walk to the nearest elementary school and take a bus, etc., to a long-range evacuation center.

Walk to the nearest elementary school

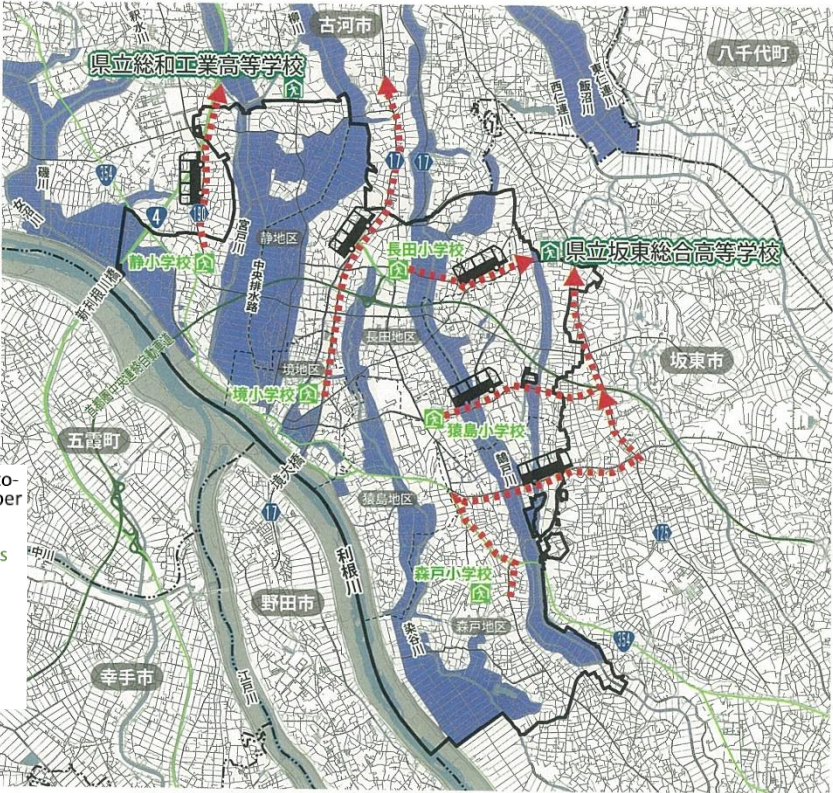
If the situation becomes more urgent, start a long-range evacuation by bus, etc.

※ バス等には限りがあります。可能な方は直接広域避難所に避難しましょう。

Legend

- Areas flooded during the Kanto-Tohoku heavy rain in September 2015 (Sakai & Koga)
- Long-range evacuation centers
- Elementary schools (meeting spots for long-range evacuation)
- National roads
- Prefectural roads

0 1 2 km
1/85,000



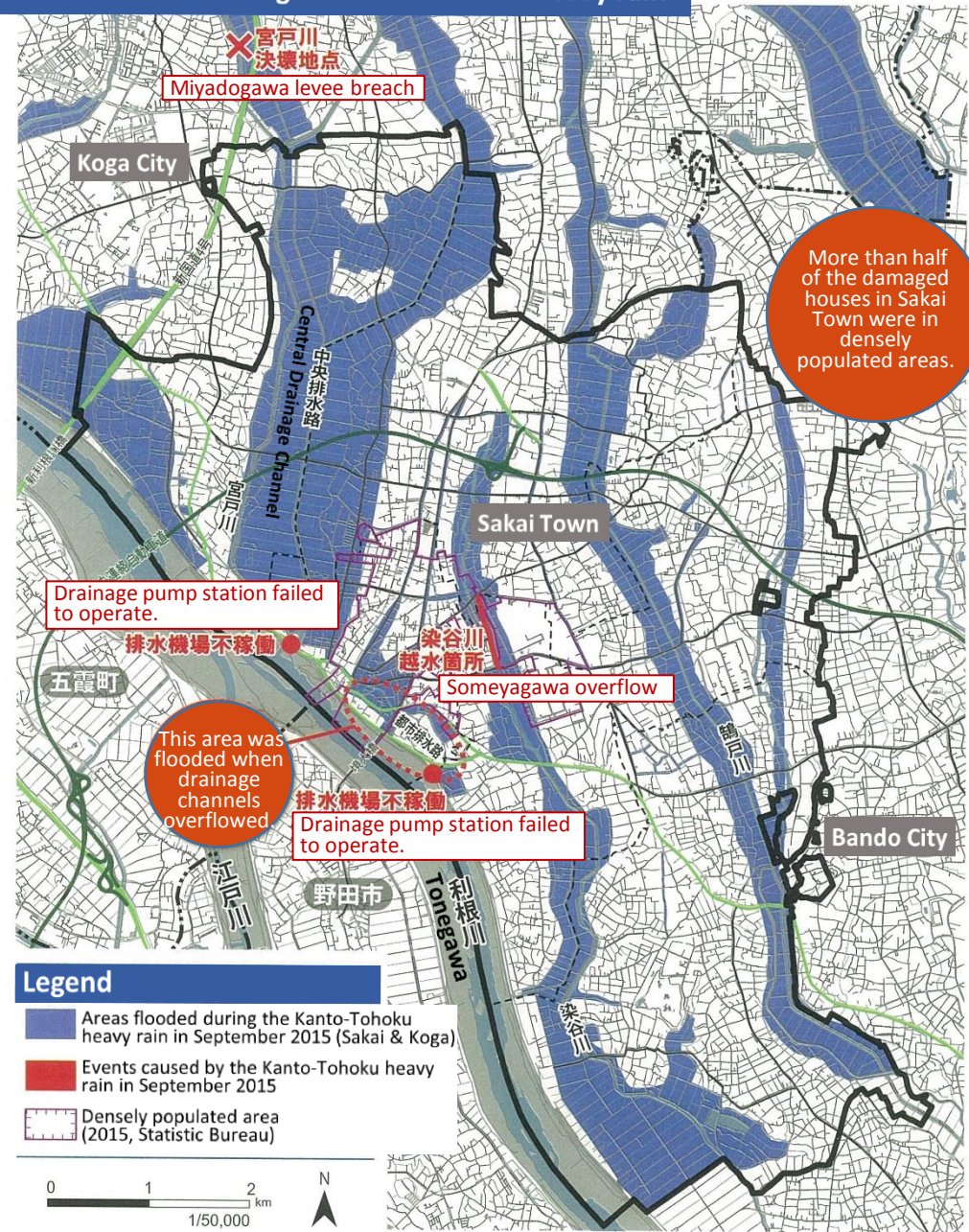
Long-range evacuation



Pay attention to evacuation advisories/orders and other information and get ready for early evacuation.

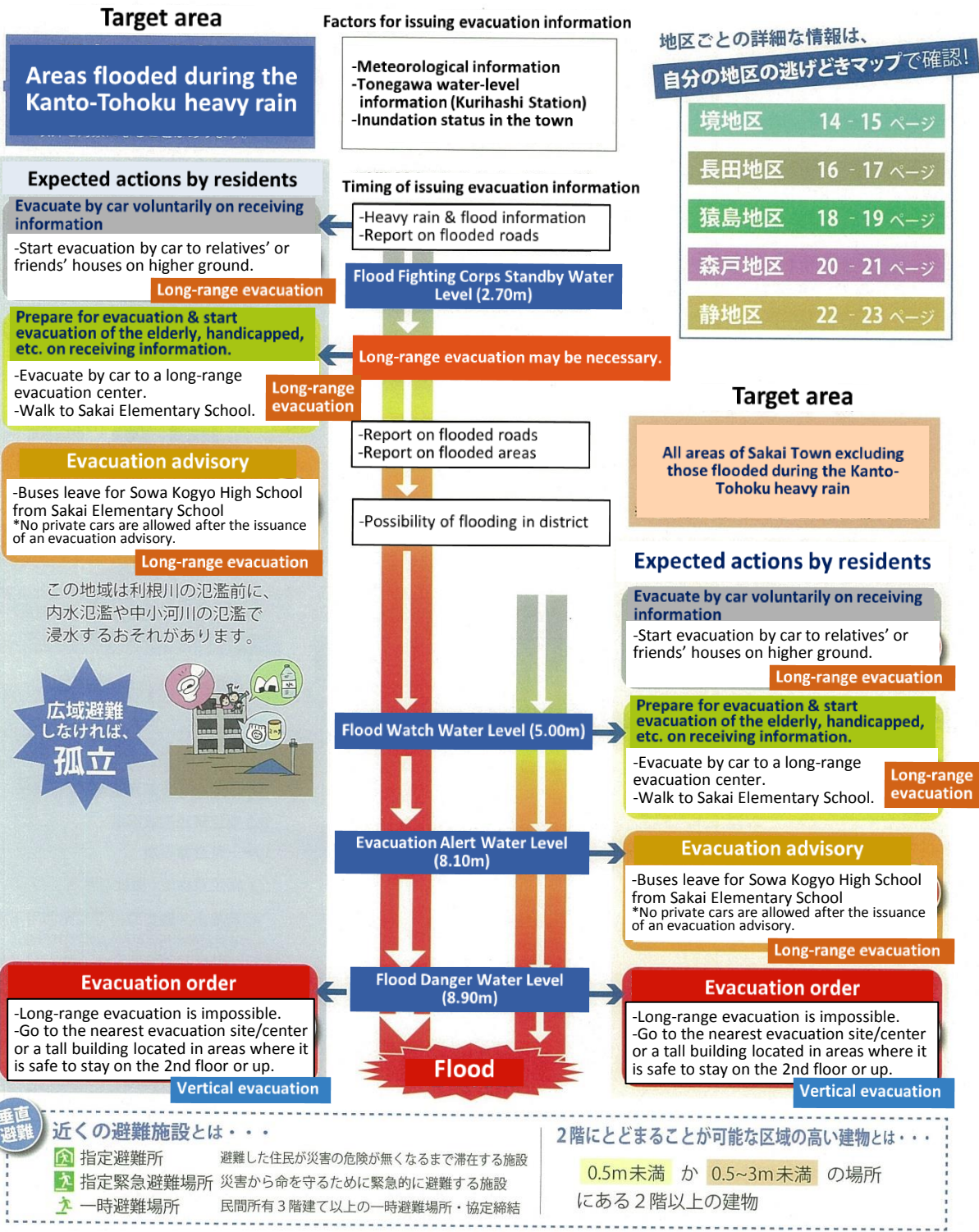
Evacuation advisories and other information will be issued first to areas flooded during the Kanto-Tohoku heavy rain, then to other areas. This rule is subject to change, depending on the conditions of rain and inundation.

Areas flooded during the Kanto-Tohoku heavy rain



Timeline of actions in case of a Tonegawa flood

※タイムラインはあくまで1つの目安です。降った雨量や、そのときの気象情報などによって変わることがあります。



Nigedoki map for Sakai District

Flood & area characteristics of Sakai District

- The area is shaped like a mortar and collects water easily.
- Among the buildings damaged by inland flooding (e.g., overflows from the town's drainage channels) during the 2015 Kanto-Tohoku heavy rain, more than 60% of them were located in this district.
- Areas, such as Kaminakacho, Kamimachi, Miyamotocho, Sakahanacho, Shinyoshicho, Yamagamicho, and Yokodai, have been flooded repeatedly due to heavy rain events, including the 2015 Kanto-Tohoku heavy rain.

When to start evacuation

- In case of heavy rain, inland flooding may occur so soon in Sakai District that you may miss the timing of evacuation.
- When there is a possibility that Tonegawa may flood, you should pay careful attention to weather, evacuation and other information and start long-range evacuation voluntarily before inland flooding occurs.

Timeline of actions in case of a Tonegawa flood Target area: Sakai District i.e., areas flooded during the Kanto-Tohoku heavy rain

Voluntary evacuate by car

Long-range evacuation

- Start evacuation by car to relatives' or friends' houses on higher ground.

Prepare for evacuation & start evacuation of the elderly, handicapped, etc.

Long-range evacuation

- Evacuate by car to a long-range evacuation center.
- Walk to Sakai Elementary School.
- *When a long-range evacuation is not an option because you don't have any vehicle...

Evacuation advisory

Long-range evacuation

- Buses leave for Sowa Kogyo High School from Sakai Elementary School
- *No private cars are allowed after the issuance of an evacuation advisory.

Evacuation order

Vertical evacuation

- Long-range evacuation is impossible.
- Go to nearest emergency evacuation sites or the second or higher floors of a tall building located in areas whose estimated inundations are less than 3 meters.

Evacuation sites & centers

Long-range evacuation centers

施設名	所在地	建物階数	利用可否・利用可能階数※
茨城県立坂東総合高等学校	坂東市逆井 2833-115	3 階	全館利用可
茨城県立総和工業高等学校	古河市葛生 1004-1	4 階	2 階以上利用可

Designated evacuation centers/Designated emergency evacuation centers

施設名	所在地	建物階数	利用可否・利用可能階数※
境小学校 広域避難集合場所	境町 293	3 階	3 階利用可
中央公民館	境町 395-1	2 階	不可
茨城県立境高等学校	境町 175	4 階	3 階以上利用可

Designated emergency evacuation sites

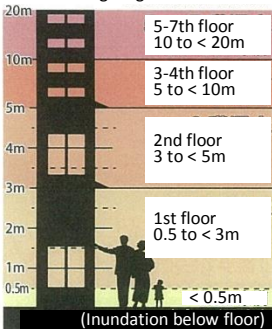
施設名	所在地	建物階数	利用可否・利用可能階数※
水害避難タワー	境町 391-1	3 階	2 階以上(役場庁舎 3 階以上) 利用可
アイレットハウス (定住促進住宅)	境町 888	3 階	屋上利用可

Temporary evacuation sites

施設名	所在地	建物階数	利用可否・利用可能階数※
新菱農機 (株)	境町 1409-2	3 階	不可
(有) 長沢デンキ商会	境町 1407-6	3 階	不可
(株) プリリアントフューチャー	境町 2123-4	3 階	3 階利用可
(株) 開明	境町 1534-4	3 階	不可
早稲田教育ゼミナール	境町 2199-10	3 階	不可

Max. inundation depth

Comparison of building height with inundation depth



Areas requiring early evacuation

Areas dangerous to stay in

- Fast flood flows may destroy houses.
- inundation may last for 2 weeks.

Areas flooded during the Kanto-Tohoku heavy rain in September 2015 (Sakai & Koga)

Legend

- Town Hall
- Hospital
- Police
- Kenohdo Highway
- National road
- Main road

- See left for these 3 categories.

Designated evacuation center for those requiring special care

Centers/sites cannot be used in case of a Tonegawa/Watarase flood.

*Safe floors are determined based on the flood simulations of Tonegawa and Watarasegawa.

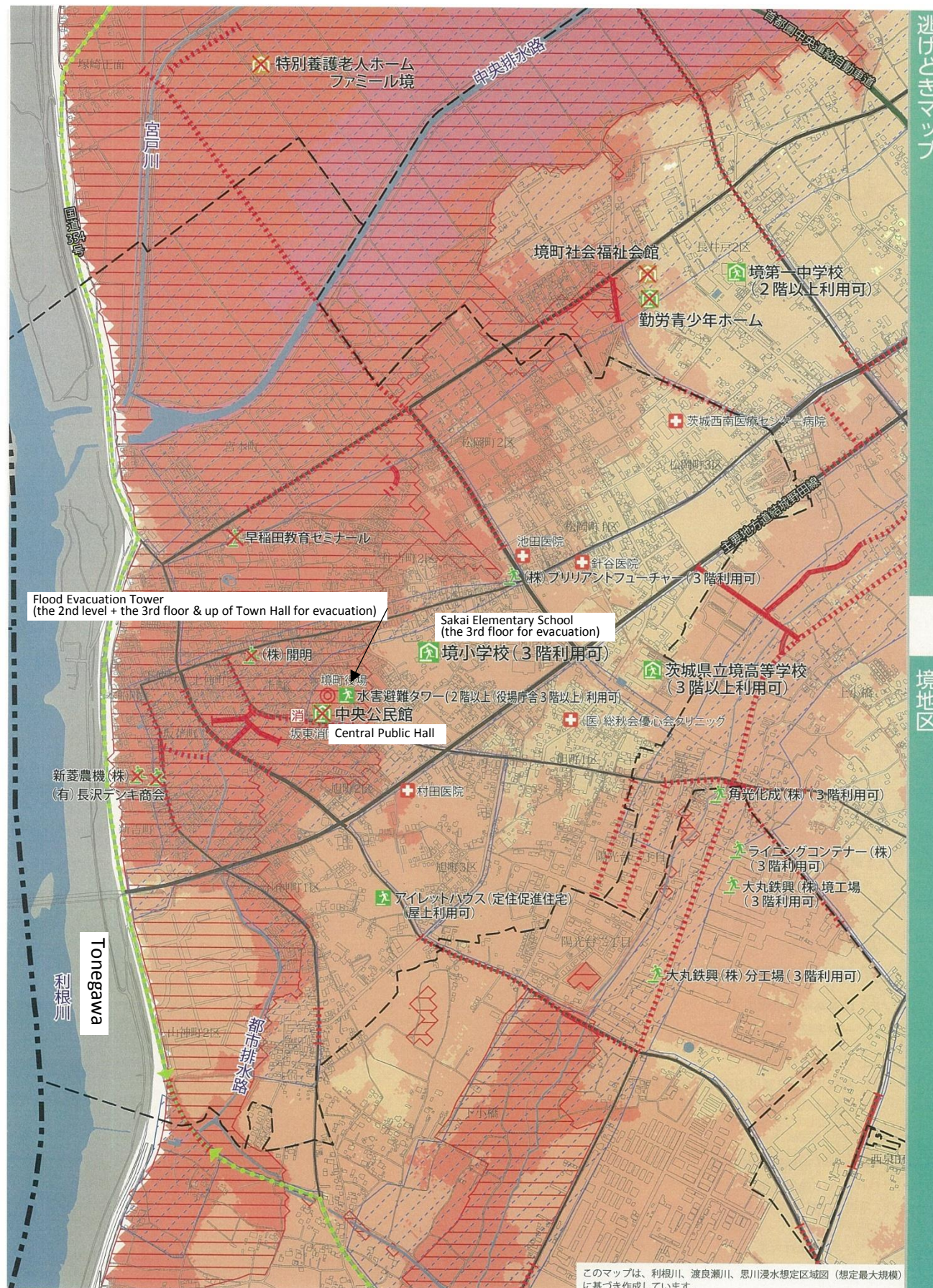
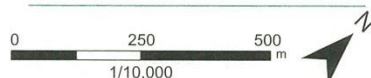
Flooded road

Impassable

Main roads impassable due to submergence during the 2015 Kanto-Tohoku heavy rain

Passable

Roads unlikely to be flooded based on the records of the 2015 Kanto-Tohoku heavy rain



このマップは、利根川、渡良瀬川、思川浸水想定区域図(想定最大規模)に基づき作成しています。